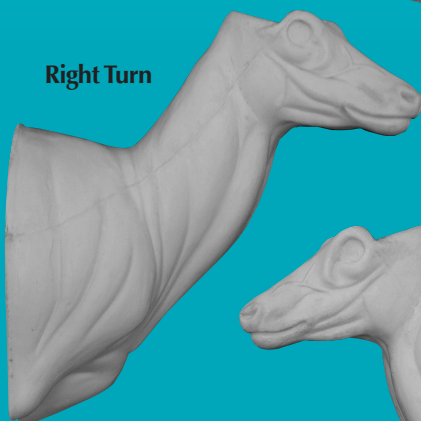
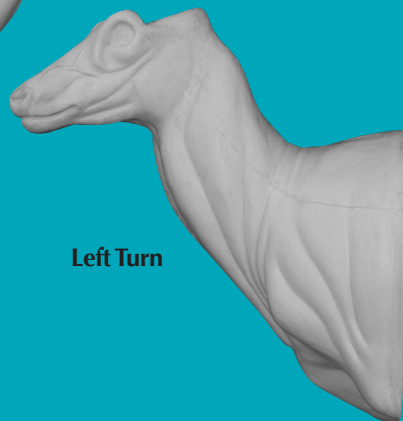


AXIS DEER
Semi Upright
Left Turn



Right Turn



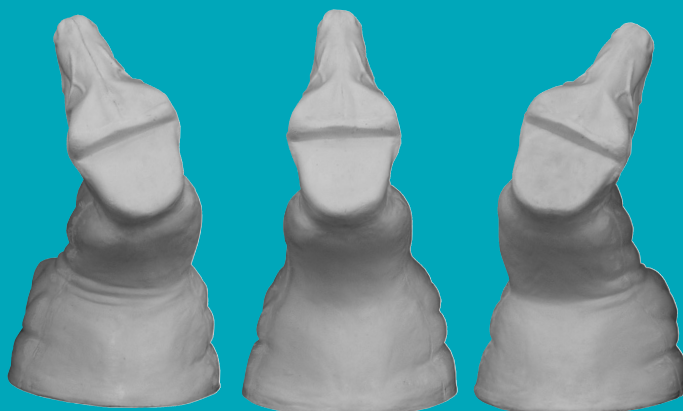
Left Turn



Left Turn

Straight

Right Turn



Left Turn

Straight

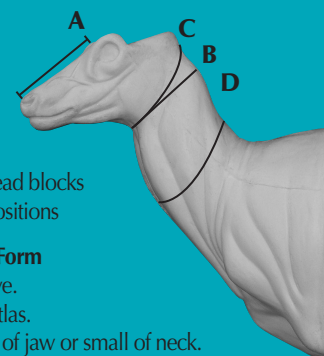
Right Turn



Item #	Turn	A	B	C	D	Eye Size	Price
12-AX19L	LT	6 3/4	X 20 1/4	X 19	X 24 1/4	32mm	\$ 70.00
12-AX20L	LT	6 3/4	X 21 1/4	X 20	X 25	32mm	\$ 71.00
12-AX21L	LT	6 3/4	X 22 1/4	X 21	X 27	32mm	\$ 72.00
12-AX22L	LT	6 3/4	X 23 1/4	X 22	X 27	32mm	\$ 73.00
Item #	Turn	A	B	C	D	Eye Size	Price
12-AX19R	RT	6 3/4	X 20 1/4	X 19 1/4	X 24 3/4	32mm	\$ 70.00
12-AX20R	RT	6 3/4	X 21	X 19 1/2	X 25 1/4	32mm	\$ 71.00
12-AX21R	RT	6 3/4	X 22 1/4	X 21	X 26 1/2	32mm	\$ 72.00
12-AX22R	RT	6 3/4	X 22 1/2	X 21 1/2	X 27	32mm	\$ 73.00
Item #	Turn	A	B	C	D	Eye Size	Price
12-AX19S	STR	6 3/4	X 20 1/4	X 19 1/4	X 25 1/4	32mm	\$ 70.00
12-AX20S	STR	6 3/4	X 20 3/4	X 19 3/4	X 24 3/4	32mm	\$ 71.00
12-AX21S	STR	6 3/4	X 22	X 21	X 26 1/4	32mm	\$ 72.00
12-AX22S	STR	6 3/4	X 22 3/4	X 21 1/2	X 27	32mm	\$ 73.00

FEATURES / DESCRIPTION

- Anatomically correct forms
- Same angles on all sizes and positions
- Excellent facial detail
- Well defined muscle tone
- Quick set eye sockets
- 1/2" plywood backboards and head blocks
- 4 popular sizes available in 3 positions



Measurement of AXIS DEER 12 Form

- A. Tip of nose to front corner of eye.
- B. Circumference of neck at the atlas.
- C. Circumference of neck at base of jaw or small of neck.
- D. Circumference at mid-neck.