

GOAT, SPANISH / CATALINA ORIGINAL SEMI UPRIGHT SERIES



CAT042



CAT030

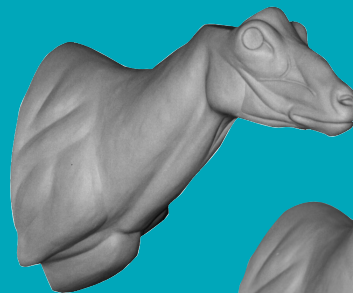


CAT041

| Item # | Turn | A | B | C | Eye Size | Price |
|--------|------|---------|----------|--------|----------|----------|
| CAT031 | LT | 6 1/2 X | 17 1/4 X | 17 1/4 | 28mm | \$ 63.00 |
| CAT041 | LT | 6 1/2 X | 18 X | 18 | 28mm | \$ 64.00 |
| Item # | Turn | A | B | C | Eye Size | Price |
| CAT032 | RT | 6 1/2 X | 17 X | 17 1/4 | 28mm | \$ 63.00 |
| CAT042 | RT | 6 1/2 X | 17 3/4 X | 17 3/4 | 28mm | \$ 63.00 |
| Item # | Turn | A | B | C | Eye Size | Price |
| CAT030 | STR | 6 1/2 X | 17 X | 17 1/4 | 28mm | \$ 63.00 |
| CAT040 | STR | 6 1/2 X | 17 1/4 X | 17 1/2 | 28mm | \$ 63.00 |

GOAT, SPANISH / CATALINA FULL SNEAK 300 SERIES

| Item # | Turn | A | B | C | Eye Size | Price |
|--------|------|---------|----------|--------|----------|----------|
| CAT321 | LT | 6 X | 15 X | 15 | 28mm | \$ 61.00 |
| CAT331 | LT | 6 1/2 X | 16 X | 15 3/4 | 28mm | \$ 61.00 |
| CAT341 | LT | 6 X | 16 X | 16 | 28mm | \$ 62.00 |
| Item # | Turn | A | B | C | Eye Size | Price |
| CAT322 | RT | 6 X | 15 X | 15 | 28mm | \$ 61.00 |
| CAT332 | RT | 6 1/4 X | 16 X | 16 | 28mm | \$ 62.00 |
| CAT342 | RT | 6 X | 16 1/4 X | 16 1/4 | 28mm | \$ 62.00 |
| Item # | Turn | A | B | C | Eye Size | Price |
| CAT310 | STR | 5 3/4 X | 13 3/4 X | 13 1/2 | 28mm | \$ 59.00 |
| CAT320 | STR | 6 X | 14 3/4 X | 14 3/4 | 28mm | \$ 60.00 |
| CAT330 | STR | 6 X | 15 1/2 X | 15 1/2 | 28mm | \$ 61.00 |
| CAT340 | STR | 6 1/4 X | 15 3/4 X | 15 3/4 | 28mm | \$ 61.00 |
| CAT350 | STR | 6 1/4 X | 17 1/4 X | 17 1/2 | 28mm | \$ 63.00 |



CAT330



CAT340



CAT350

GOAT, SPANISH / CATALINA CORNER COLLECTION



CAT1C-2230

| Item # | Turn | A | B | C | Eye Size | Price |
|------------|------|------------|----------|--------|----------|----------|
| CAT1C-2230 | STR | FS 5 1/4 X | 17 3/4 X | 17 1/2 | 28mm | \$ 73.00 |

- A. Tip of nose to front corner of eye.
- B. Circumference of neck at the atlas.
- C. Circumference of neck at base of jaw or small of neck.

