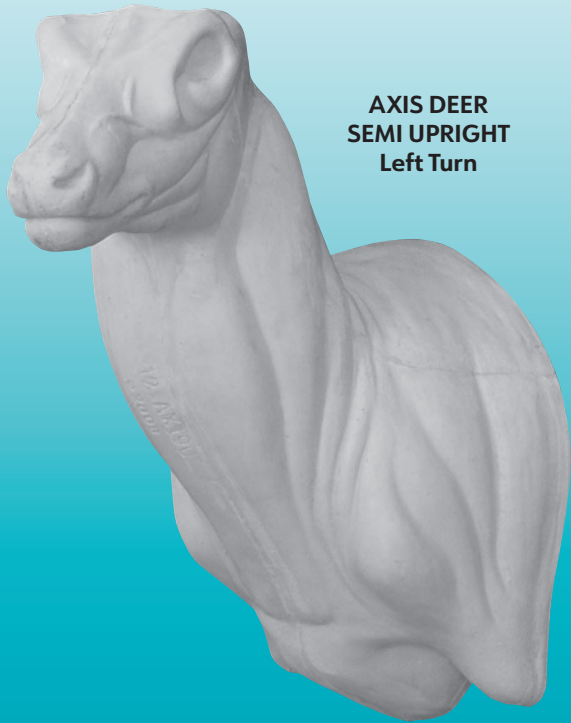
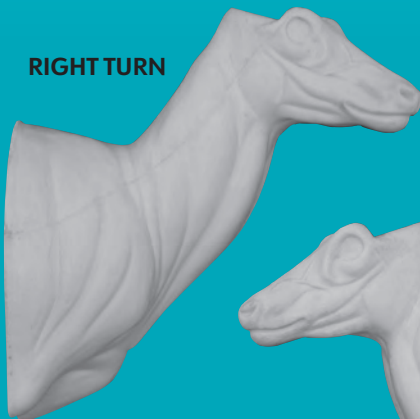


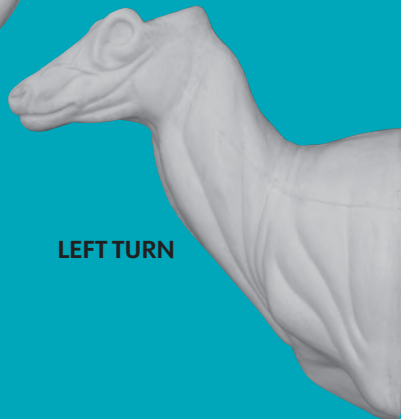
AXIS DEER



AXIS DEER
SEMI UPRIGHT
Left Turn



RIGHT TURN



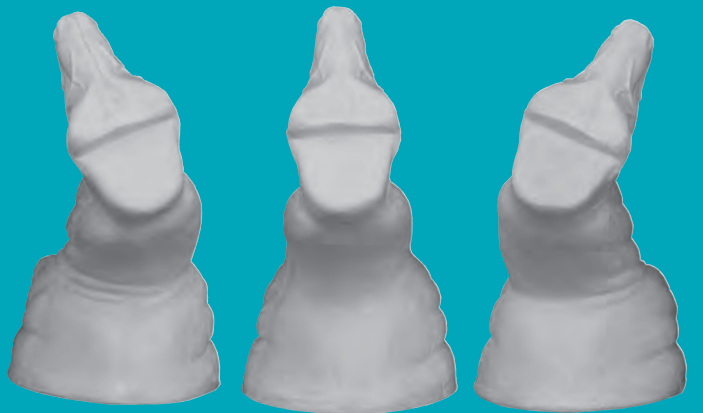
LEFT TURN



LEFT TURN

STRAIGHT

RIGHT TURN



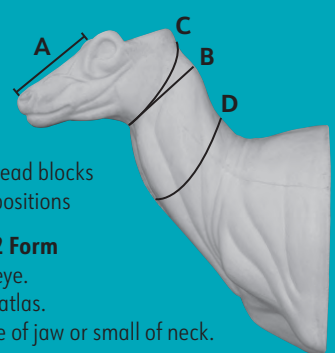
LEFT TURN

STRAIGHT

RIGHT TURN



Item #	Turn	A	B	C	D	Eye Size	Price	FEATURES / DESCRIPTION
12-AX19L	LT	6 3/4 X	20 1/4 X	19 X	24 1/4 X	32mm	\$ 90.00	<ul style="list-style-type: none"> Anatomically correct forms Same angles on all sizes and positions Excellent facial detail Well defined muscle tone Quick set eye sockets 1/2" plywood backboards and head blocks 4 popular sizes available in 3 positions
12-AX20L	LT	6 3/4 X	21 1/4 X	20 X	25 X	32mm	\$ 91.00	
12-AX21L	LT	6 3/4 X	22 1/4 X	21 X	27 X	32mm	\$ 92.00	
12-AX22L	LT	6 3/4 X	23 1/4 X	22 X	27 X	32mm	\$ 93.00	
Item #	Turn	A	B	C	D	Eye Size	Price	
12-AX19R	RT	6 3/4 X	20 1/4 X	19 1/4 X	24 3/4 X	32mm	\$ 90.00	
12-AX20R	RT	6 3/4 X	21 X	19 1/2 X	25 1/4 X	32mm	\$ 91.00	
12-AX21R	RT	6 3/4 X	22 1/4 X	21 X	26 1/2 X	32mm	\$ 92.00	
12-AX22R	RT	6 3/4 X	22 1/2 X	21 1/2 X	27 X	32mm	\$ 93.00	
Item #	Turn	A	B	C	D	Eye Size	Price	
12-AX19S	STR	6 3/4 X	20 1/4 X	19 1/4 X	25 1/4 X	32mm	\$ 90.00	
12-AX20S	STR	6 3/4 X	20 3/4 X	19 3/4 X	24 3/4 X	32mm	\$ 91.00	
12-AX21S	STR	6 3/4 X	22 X	21 X	26 1/4 X	32mm	\$ 92.00	
12-AX22S	STR	6 3/4 X	22 3/4 X	21 1/2 X	27 X	32mm	\$ 93.00	



Measurement of AXIS DEER 12 Form

- A. Tip of nose to front corner of eye.
- B. Circumference of neck at the atlas.
- C. Circumference of neck at base of jaw or small of neck.
- D. Circumference at mid-neck.