



PEDICLES

Item#	Species	Pedicle Size	Length of Skull			Price
			x	Eye to Nose		
95-ANK	ANTELOPE	1 ½	11 ⅛	X	7 ¼	\$ 58.00
95-ADK	AOUDAD		13	X	7 ¼	\$ 90.00
95-CARK	CARIBOU	1 ¾	16	X	10	\$ 98.00
95-WTMK	DEER, WT	1	11 ¼	X	6 ⅞	\$ 58.00
95-WTSK	DEER, WT	¾	10 ¾	X	5 ⅞	\$ 58.00
95-ELKK	ELK	1 ¾	18 ½	X	10 ⅜	\$ 107.00
95-MDK	MULE DEER	1 ¼	11 ⅝	X	7 ¼	\$ 58.00



Eye to Nose = Bone Measurement

CONVERTIBLE

Item#	Species	Skull Cap Slot		Length of Skull			Price	
		x		x	Eye to Nose			
95-ANC	ANTELOPE	4 ¾	X	2 ⅞	11 ⅛	X	7 ¼	\$ 58.00
95-CARC	CARIBOU	4 ½	X	2 ⅞	16	X	10	\$ 98.00
95-WTMC	DEER, WT	3 ½	X	2	11 ¼	X	6 ⅞	\$ 58.00
95-WTSC	DEER, WT	3 ¼	X	1 ⅞	10 ¾	X	5 ⅞	\$ 58.00



Eye to Nose = Bone Measurement

SKULL CAPS

Item #	Size	Price
95-DCX	1 ½ X-LARGE	\$ 20.00
95-DCL	1 ¼ LARGE	\$ 20.00
95-DCM	1 MEDIUM	\$ 17.00
95-DCS	¾ SMALL	\$ 17.00



TRANSLUCENT SKULL - UNFINISHED

TranslucentSkull has been specially made to work with the Skull Shine light kit (page 506). Channels for the light kit have been started, these channels will need to be deepened. Skull will also need to be painted so it will look realistic when the light is off.

95-TWTLG DEER, WT LARGE \$ 115.00





PEDICLES

Item#	Species	Pedicle Size	Length of Skull x Eye to Nose	Price
95-CANK	ANTELOPE		11 3/8 X 7	\$ 115.00
95-CAXMK	AXIS DEER	1 1/8	10 5/8 X 5 1/4	\$ 115.00
NEW 95-CBBK	BLACKBUCK	3 1/2 *	9 1/4 X 5 3/8	\$ 120.00
95-CCARK	CARIBOU	1 1/2	15 X 6 3/4	\$ 168.00
95-CWTSK	DEER, WT	3/4	10 7/8 X 6 1/8	\$ 102.00
95-CELKXK	ELK	2 3/8 X 3	18 3/4 X 10 5/8	\$ 207.00
95-CELKLK	ELK	2 X 2 1/2	18 3/4 X 10 5/8	\$ 205.00
95-CELKMK	ELK	1 5/8	17 1/2 X 7	\$ 181.00
NEW 95-CGEMK	GEMSBOK ORYX	1 1/8	17 3/4 X 10	\$ 181.00
95-CMTGK	GOAT, MOUNTAIN	4 3/8 **	10 1/4 X 6 1/8	\$ 117.00
NEW 95-CIMPK	IMPALA	3 1/2 *	10 3/4 X 6	\$ 111.00
95-CMDK58	MULE DEER	1 5/8	12 3/4 X 7 1/8	\$ 120.00
95-CMDK38	MULE DEER	1 3/8	11 7/8 X 6 3/4	\$ 117.00
95-CMDK18	MULE DEER	1 1/8	11 1/4 X 5 1/8	\$ 115.00
95-CDLSK	SHEEP, DALL	10**	11 X 6 1/2	\$ 200.00
95-CADSK	SHEEP, AOUDAD	10**	13 7/8 X 8 7/8	\$ 181.00
95-CBHSK	SHEEP, BIG HORN	12 3/4 **	10 7/8 X 7 1/8	\$ 205.00
NEW 95-CMSK	SHEEP, MOUFLON	5 1/2 *	9 3/4 X 5 1/4	\$ 124.00

** Core Circumference

Eye to Nose = Bone Measurement

CONVERTIBLE

Item#	Species	Skull Cap Slot	Length of Skull x Eye to Nose	Price
95-CAXXC	AXIS DEER	4 X 2 3/4	10 7/8 X 5 5/8	\$ 120.00
95-CAXMC	AXIS DEER	4 X 2 3/4	10 5/8 X 5 1/4	\$ 115.00
95-CCARC	CARIBOU	4 1/4 X 2 3/4	15 X 6 3/4	\$ 168.00
95-CWTSC	DEER, WT	2 5/16 X 2 1/4	10 1/4 X 6 1/8	\$ 102.00
95-CELKLC	ELK	5 5/8 X 4 1/2	18 3/4 X 10 5/8	\$ 205.00
95-CELKMC	ELK	5 1/4 X 3 3/4	17 1/2 X 7	\$ 181.00
95-CMOSC	MOOSE	7 1/2 X 4 3/4	24 1/2 X 8 1/2	\$ 289.00
95-CMDC58	MULE DEER	4 1/2 X 3 1/8	12 3/4 X 7 1/8	\$ 120.00
95-CMDC38	MULE DEER	4 1/8 X 2 3/4	11 7/8 X 6 3/4	\$ 117.00
95-CMDC18	MULE DEER	4 X 2 1/4	11 1/4 X 5 1/8	\$ 115.00

Eye to Nose = Bone Measurement



WHILE SUPPLIES LAST

SKULL CAP FOR REMOVABLE ANTLERS

Item#	Species	Pedicle Size	Price
95-CCBC	CARIBOU	1 1/2	\$ 36.25
95-CEKC	ELK	1 5/8	\$ 40.00



MOUNTAIN MIKE'S REPRODUCTION SKULLS



THE SKULL MASTER

Item #	Animal	Size	Price
95-MWTLK	DEER, WT	LARGE	\$ 35.00
95-MWTMK	DEER, WT	MEDIUM	\$ 35.00
95-MWTSK	DEER, WT	SMALL	\$ 35.00
95-MELK	ELK	MED/LG	\$ 163.00

LARGE WHITETAIL CAN BE USED FOR MULE DEER



The Skull Master allows you to have a beautiful European mount in just 10 minutes. Simply attach each harvested or naturally shed antler to the skull plate from the bottom with the included hardware. Then attach the skull plate section of the skull to the bottom section and it's done!



THE SHED SPREADER

Item #	Animal	Size	Price
95-MSSL	DEER, WT	LARGE	\$ 15.00
95-MSSM	DEER, WT	MEDIUM	\$ 15.00

If you have a nice set of sheds you'd like to display, you're missing the skull plate from your buck or you had to remove it, the Shed Spreader skull plate is the ideal solution. These work well displayed on their own, as part of a standard plaque mount or shoulder form mount.



FLAG



BONE



FALL

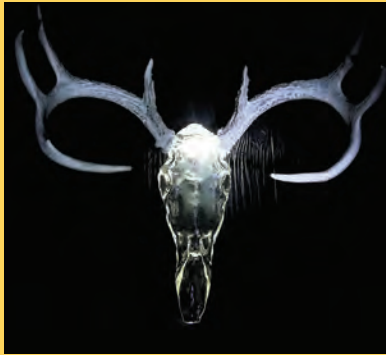


SNOW

THE SKULL MASTER - HYDRO DIPPED

Item #	Animal	Size	Price
95-MWTSK BONE	DEER, WT	SMALL	\$ 60.00
95-MWTSK FALL	DEER, WT	SMALL	\$ 60.00
95-MWTSK FLAG	DEER, WT	SMALL	\$ 60.00
95-MWTSK SNOW	DEER, WT	SMALL	\$ 60.00
95-MWTMK BONE	DEER, WT	MEDIUM	\$ 60.00
95-MWTMK FALL	DEER, WT	MEDIUM	\$ 60.00
95-MWTMK FLAG	DEER, WT	MEDIUM	\$ 60.00
95-MWTMK SNOW	DEER, WT	MEDIUM	\$ 60.00
95-MWTLK BONE	DEER, WT	LARGE	\$ 60.00
95-MWTLK FALL	DEER, WT	LARGE	\$ 60.00
95-MWTLK FLAG	DEER, WT	LARGE	\$ 60.00
95-MWTLK SNOW	DEER, WT	LARGE	\$ 60.00

LARGE WHITETAIL CAN BE USED FOR MULE DEER

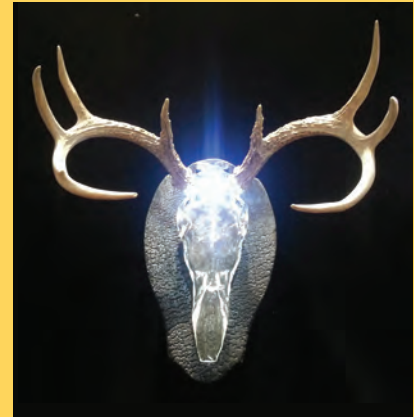


Skulls are hand-blown glass crafted in the United States of America. These artists and craftsmen use centuries old glass-making techniques combined with the latest in tooling and production equipment. "Old world meets new world." Fire, earth and breath are combined to bring you the most captivating "Euro-style" mount out there.

Skulls weigh 4-5 lbs.

Item #	Skull Size	Price
95-SKGS	Small 4 1/2 X 11	\$ 150.00

WHILE SUPPLIES LAST



GLASS SKULLS



LIGHTED PANELS FOR GLASS SKULLS

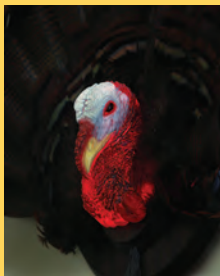
- 1 LED light harness
- A/C adapter
- D/C adapter
- On/Off switch
- Holes and grooves for hiding wires and switch

Item #	Size	Price
99-PT0916PED	TORCHED 9 X 16	\$ 75.00
99-PA0916PED	OAK 9 X 16	\$ 75.00
99-PW0916PED	WALNUT 9 X 16	\$ 75.00

REVERSIBLE FOR WALL OR DESK

WHILE SUPPLIES LAST

TURKEY HEAD LIGHT KIT



Item #	Color	Price
95-LITKR	Red	\$ 35.00

TURKEY HEAD NOT INCLUDED

Will work with reproduction turkey heads on page 396.

WHILE SUPPLIES LAST

LIGHT KIT INCLUDES:
1 LED LIGHT HARNESS
A/C ADAPTER
D/C ADAPTER
REMOTE CONTROL

TURKEY FAN PEDESTAL



99-PDTKYPED
Dark Oak
(3 pieces)
\$ 42.00



Will work with Turkey Head Light Kit. Holes and grooves are in place to hide wires.